

FITFLEET-EXCAVATOR-500HR-CVA

PM Checklist

● 1 ● 1 ● 112 ● 0

Inspection Number	20853540	Customer No	2969824372
Serial Number	EBF20063	Customer Name	AUSTRALIAN HAMMER SUPPLIES HIRE PTY LTD
Make	CATERPILLAR	Customer Email	hireaccounts@austral
Model	374F L	Work Order	su31535
Equipment Family	Large Hydraulic Excavator	Completed On	17/01/2025 11:31:00 AM
Asset ID	AHSH77	Inspector	Mitchell Holst
SMU	8576.77 Hours	PDF Generated On	17/01/2025
Location	155 Sculthorpe Av, Whitlam, Australian Capital Territory 2611, Australia	Coordinates	0, 0, 0

Technician

[Signature]

General Info & Comments

General info/Comments

MONITOR

Comments: Operator complained of excessive fuel consumption.



Image Comment(s):Bent dog bones



Image Comment(s):Missing bolts in dog bones



Image Comment(s):Bent dog bones

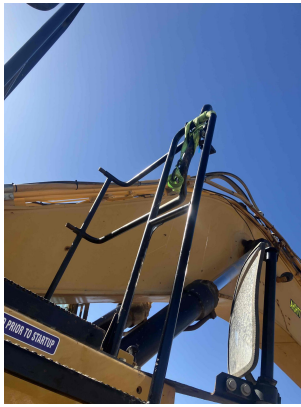


Image Comment(s):Broken hand rail



Image Comment(s):Missing belly guard



Image Comment(s):Broken hydraulic line bracket

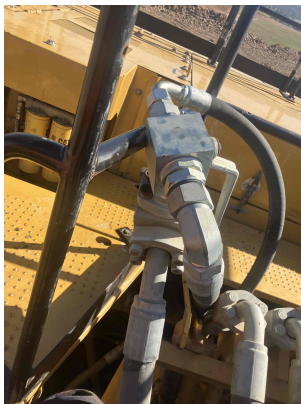


Image Comment(s):Valve body wearing into rail

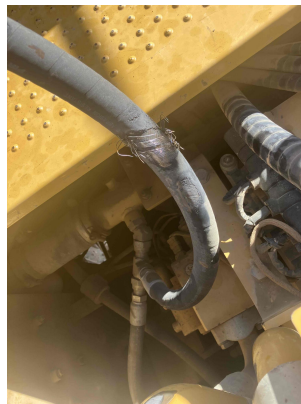


Image Comment(s):Worn hoses

TASK SAFETY INSTRUCTIONS - Revision Number: 02 Date: 25th September 2023

- | | |
|--|------|
| ● 1.1 Wear Correct PPE at all times | PASS |
| ● 1.2 All isolation and safe work procedures must be followed | PASS |
| ● 1.3 Identify task hazards and controls utilising hierarchy or controls model | PASS |
| ● 1.4 Ensure a competent operator and spotter is utilised to move mobile equipment | PASS |

●	1.5 Ensure all mobile equipment is fundamentally stable	PASS
●	1.6 Ensure three points of contact is maintained during access and egress	PASS
●	1.7 Ensure acceptable housekeeping standards are maintained at all times	PASS
MACHINE GENERAL RUNNING CHECKS		
●	2.1 Check all work lights, beacon & reverse alarm for operation	PASS
●	2.2 Test all dash warning lights, gauges and audible alarms for correct operation	PASS
●	2.3 Check idle timer for correct shut down operation	PASS
●	2.4 Check operation of all three emergency stop buttons	PASS
●	2.5 Check operation of horn	PASS
●	2.6 Check operation of reverse camera	PASS
●	2.7 Check alternator charge voltage - ACTUAL_____V	PASS
●	2.8 Check operation of auto grease system by manually activating timer	PASS
●	2.9 Check fire system control panel for 'Normal'	PASS
●	2.10 Test hydraulic lock out function operation	PASS
●	2.11 Check window wiper and washer operation	PASS
PM SAFETY GENERAL INSPECTION		
●	3.1 Visually ensure all guards, shields and covers are in place and in good condition to ensure personal are protected from rotating parts	FAIL
Comments: Missing bottom right belly guard		



●	3.2 Check condition of machine identification signage	PASS
---	---	------

●	3.3 Inspect ROPS/FOPS condition	PASS
---	---------------------------------	------

PM BRAKING SYSTEM

●	4.1 Test travel brakes – Ensure the machine comes to a stop when travel controls are released	PASS
---	---	------

●	4.2 Test travel brakes – Ensure the brakes hold on a suitable slope	PASS
---	---	------

PM FIRE SUPPRESSION SYSTEM

●	5.1 Ensure fire suppression bottle and components are securely mounted and in good condition	PASS
---	--	------

●	5.2 Ensure fire suppression is correctly charged	PASS
---	--	------

●	5.3 Inspect last charge date - ACTUAL _____	PASS
---	---	------

●	5.4 Check all fire extinguishers are securely mounted and in good condition	PASS
---	---	------

●	5.5 Check all fire extinguishers are correctly charged	PASS
---	--	------

●	5.6 Inspect last charge date - ACTUAL _____	PASS
---	---	------

PM ENGINE

●	6.1 Perform engine valve set	PASS
---	------------------------------	------

●	6.2 Inspect air intake system hoses, pipes, clamps for signs of dirt ingress	PASS
●	6.3 Inspect engine for oil or fuel leaks	PASS
●	6.4 Inspect engine components for missing clamps	PASS
●	6.5 Inspect exhaust system for signs of leaks, loose bolts or missing clamps	PASS
●	6.6 Inspect turbo for security and signs of leaks	PASS
●	6.7 Inspect condition of exhaust lagging	PASS
●	6.8 Inspect engine mounts for condition and loose hardware	PASS
●	6.9 Inspect alternator mount condition and adjustment	PASS
●	6.10 Inspect wiring condition and security	PASS
●	6.11 Clean engine breather	PASS
●	6.12 Replace outer air filter	PASS
●	6.13 Inspect & adjust engine belts	PASS

PM ENGINE COOLING SYSTEM

●	7.1 Check coolant level	PASS
●	7.2 Check condition of radiator cap	PASS
●	7.3 Check condition of radiator core and blow out	PASS
●	7.4 Check cooling system for signs of leaks	PASS
●	7.5 Check hose and clamp condition	PASS

● 7.6 Inspect fan condition and operation	PASS
---	------

● 7.7 Inspect radiator and fan guard condition	PASS
--	------

PM SWING TRANSMISSION

● 8.1 Inspect swing transmission for signs of leaks	PASS
---	------

● 8.2 Inspect swing transmission oil level	PASS
--	------

PM HYDRAULIC SYSTEM

● 9.1 Check hydraulic oil level	PASS
---------------------------------	------

● 9.2 Inspect hydraulic cylinders for leaks and security	PASS
--	------

9.3 Inspect hydraulic hoses for leaks, damage, security

9.4 Inspect hydraulic pump condition, leaks, security

9.5 Check Pilot Accumulator operation as per OEM Maintenance Procedure - Test Boom Down Functionality with engine off
--

PM FINAL DRIVES

● 10.1 Inspect LHS final drive mount condition for leaks and security	PASS
---	------

● 10.2 Inspect LHS oil level and mag plug condition	PASS
---	------

● 10.3 Inspect RHS final drive mount condition for leaks and security	PASS
---	------

● 10.4 Inspect RHS oil level and mag plug condition	PASS
---	------

PM UNDERCARRIAGE

● 11.1 Inspect LHS track tension	PASS
----------------------------------	------

● 11.2 Inspect RHS track tension	PASS
----------------------------------	------

●	11.3 Inspect tracks for loose/missing bolts	PASS
●	11.4 Inspect load and carrier rollers for signs of leaks	PASS
●	11.5 Inspect idlers for signs of leaks	PASS
●	11.6 Inspect sprocket segments condition	PASS
●	11.7 Inspect track frame for cracks, lose or missing hardware	PASS
PM FRAME AND BODY		
●	12.1 Check panels for damage and security	PASS
●	12.2 Check access steps and walkway condition	PASS
	12.3 Inspect boom condition – cracks, missing clamps, damaged pipes, excessive movement, lubrication	
	12.4 Inspect stick condition – cracks, missing clamps, damaged pipes, excessive movement, lubrication	
	12.5 Inspect quick hitch condition and operation	
	12.6 Inspect bucket condition – cracks, wear, damage, mounts	
	12.7 Inspect GET condition and hardware	
PM ELECTRICAL SYSTEM		
●	13.1 Check battery condition	PASS
●	13.2 Check battery terminal condition	PASS
●	13.3 Check battery security	PASS
●	13.4 Check battery box drain is clear	PASS

●	13.5 Check wiring condition and security	PASS
---	--	------

PM GREASE SYSTEM

●	14.1 Check all points for acceptable lubrication	PASS
---	--	------

●	14.2 Inspect grease system operation	PASS
---	--------------------------------------	------

●	14.3 Check grease line condition	PASS
---	----------------------------------	------

●	14.4 Refill grease tank	PASS
---	-------------------------	------

●	14.5 Lubricate bucket linkage	PASS
---	-------------------------------	------

●	14.6 Lubricate blade linkage	PASS
---	------------------------------	------

●	14.7 Lubricate boom & stick linkage	PASS
---	-------------------------------------	------

●	14.8 Lubricate swing bearing	PASS
---	------------------------------	------

PM OPERATOR STATION

●	15.1 Check all doors for correct opening and closing adjustments and operation	PASS
---	--	------

●	15.2 Inspect condition of door seals	PASS
---	--------------------------------------	------

●	15.3 Check window glass and seal condition	PASS
---	--	------

●	15.4 Check mirror condition and adjustments	PASS
---	---	------

●	15.5 Fill window washer reservoir	PASS
---	-----------------------------------	------

●	15.6 Inspect air con vents condition	PASS
---	--------------------------------------	------

●	15.7 Inspect seat belt and mounting hardware	PASS
---	--	------

●	15.8 Inspect seat condition, operation and mounting	PASS
●	15.9 Replace cabin A/C filter	PASS
OIL SAMPLING		
●	16.1 Engine	PASS
●	16.2 Hydraulic System	PASS
●	16.3 LHS Final Drive	PASS
●	16.4 RHS Final Drive	PASS
●	16.5 Swing Transmission	PASS
●	16.6 Coolant	PASS
OIL AND FILTERS		
●	17.1 Replace engine oil	PASS
●	17.2 Replace engine oil filter	PASS
●	17.3 Replace primary fuel filter (water separator) element	PASS
●	17.4 Replace secondary fuel filter	PASS
●	17.5 Replace fuel system third filter	PASS
●	17.6 Replace outer air filter	PASS
●	17.7 Replace cab filter	PASS
●	17.8 Replace A/C filter	PASS

●	17.9 Replace hydraulic case drain filter	PASS
---	--	------

●	17.10 Replace hydraulic pilot filter	PASS
---	--------------------------------------	------

PM POST SERVICE INSPECTION CHECKS		
-----------------------------------	--	--

●	18.1 All inspections have been completed and rectified as required	PASS
---	--	------

●	18.2 All safety related defects have been repaired or reported	PASS
---	--	------

●	18.3 All defects have been noted and reported	PASS
---	---	------

●	18.4 All fluids are at correct level and drain plugs tight	PASS
---	--	------

●	18.5 All oil samples have visually been inspected and any notable signs of contamination have been reported	PASS
---	---	------

●	18.6 All replaced filters have been cut and inspected and photos added to CAT Inspect and reported to supervisor	PASS
---	---	------

●	18.7 Machine has been recommissioned and ready for operation	PASS
---	--	------

●	18.8 PM service notification marked off in Vision Link	COMPLETED
---	--	-----------

DEFECTS IDENTIFIED		
--------------------	--	--

●	19.1 DEFECTS IDENTIFIED	PASS
---	-------------------------	------